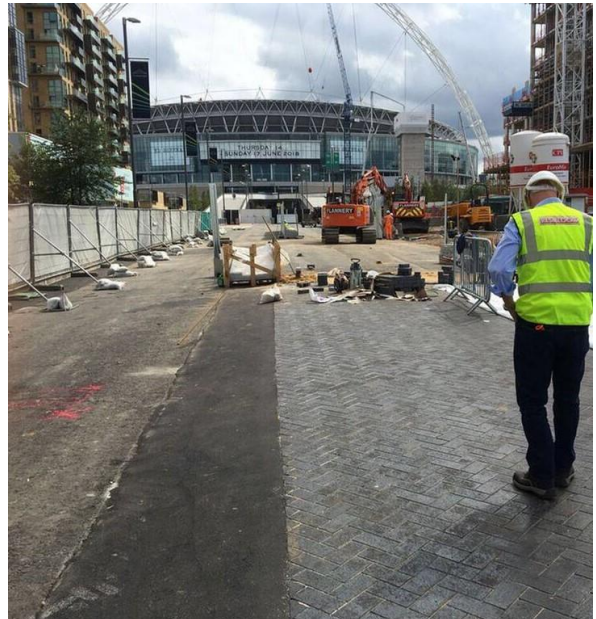


**Project:** Olympic Way, Wembley  
**Client:** Volker Fitzpatrick  
**Contractor:** Lorclon  
**Paver Type:** Marshall Tegula CBP  
Ketley Blue Clay Blocks  
Marshalls Tarvos Granite Blocks  
**Area:** 3,928m<sup>2</sup>  
**Site:** Olympic Way, Wembley Stadium  
**Product:** Resiblock '22' & Resiblock '22' A/F  
**Date:** July 2017



## The Site

More affectionately known as 'Wembley Way', Olympic Way leading to Wembley Stadium has become a staple part of any visitors' journey to 'The Home of Football'. Trailing from Wembley Park tube station to the gates of Wembley Stadium, Olympic Way was constructed through the labour of German POW as part of preparations for the 1948 Olympic Games in London. Now, Olympic way is synonymous with famous television images of opposition fans walking side by side as anticipation builds around The FA Cup Final.

## The Challenge

With many large-scale events occurring throughout the year, including the aforementioned FA Cup Final which attracts close to 90,000 people in a single afternoon, joint stabilisation to prevent paving failure was a key challenge that faced Volker Fitzpatrick. Furthermore, with a variety of bars and restaurants surrounding the Olympic Way site, Architects Dixon Jones and Volker Fitzpatrick were keen to ensure protection against staining, in particular food and grease stains.

## The Solution

Two sealers from the Resiblock Commercial range were identified, to cater for sealing a trio of different pavers types on Olympic Way at Wembley Stadium. Resiblock '22' was selected to prevent paver destabilisation of both the 1430m<sup>2</sup> of Marshall Tegula Concrete Blocks and 1710m<sup>2</sup> of Ketley Blue Clay Blocks. Meanwhile, Resiblock '22' A.F (Architectural Finish) was chosen for the 788m<sup>2</sup> of Marshalls Tarvos Granite Blocks for its high level of stain protection and UV resistance.

## Benefits at a Glance:

- One pack material
- Easy application
- Prevents sand erosion from paver joint
- Prevents the ingress of water and fuel infiltration to the sand laying course
- Maintains structural stability under heavy duty trafficking
- Elastomeric bond works in tandem with paver system



Sponsor

[www.resiblock.com](http://www.resiblock.com)

**Interpave**   
associate member